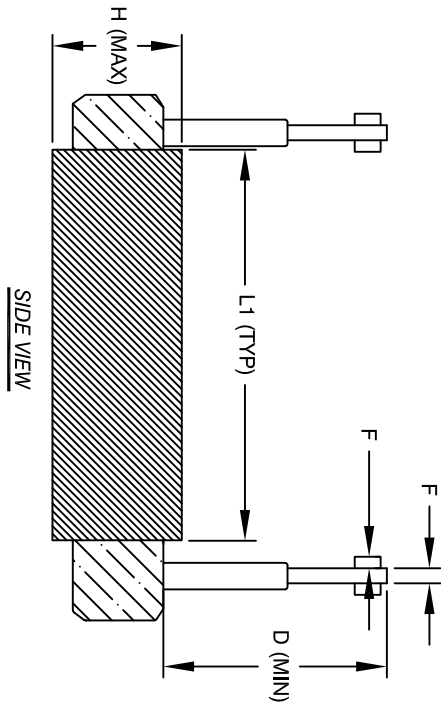


The information contained in this drawing is the sole property of Coil Winding Specialist, Inc. Any reproduction in part or whole without written permission of Coil Winding Specialist, Inc. is prohibited.

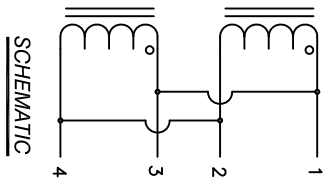
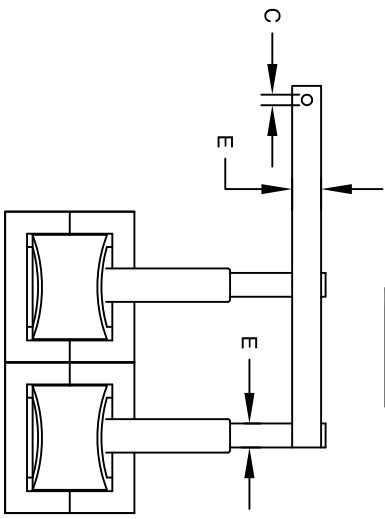
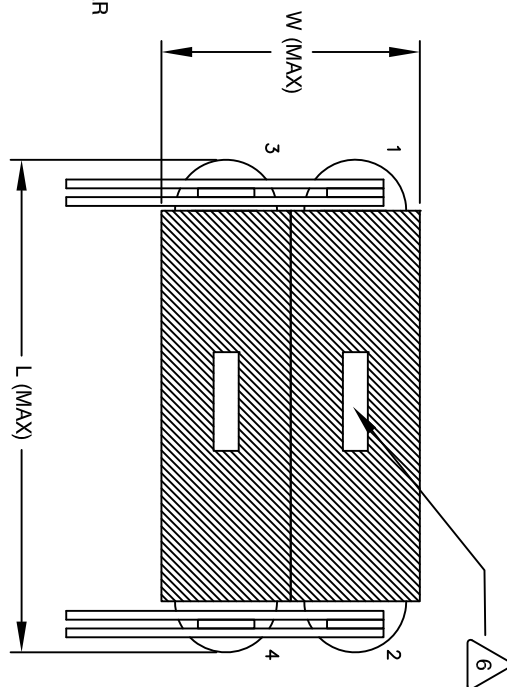
DIMENSIONAL TOLERANCES INCHES (MM)							
C	D	E	F	L	L1	W	H
0.24 [6.00]	5.50 [138.70]	1.50 [38.10]	0.25 [6.30]	17.00 [431.80]	14.00 [355.50]	9.00 [228.60]	4.00 [101.60]

REVISION HISTORY				SIGN & DATE			
REV	ECN	DESCRIPTION	BR	DATE	CHK	DATE	
A		PRODUCTION RELEASE	LL	07/27/17	JLW	07/27/17	



- 8 APPLICATION: OUTPUT CHOKE, HIGH CURRENT INDUCTOR, INPUT FILTER
- 7 BUILT TO ROHS COMPLIANCE
- 6 LABEL PART NUMBER AND REVISION WHERE SHOWN
- 5 VARNISHED AND OVEN CURED APPLY SILICON AS REQUIRED
- 4 WRAP TAPE AROUND CORES WITH CORES AND NOMEX PRE FORMED FLAT COPPER FOIL CONSTRUCTION:

- 3 WEIGHT: 51 LB 15.5 OZ (TYP)
RECOMMENDED OPERATING FREQUENCY: 60Hz TO 500KHz
RECOMMENDED AMBIENT OPERATING TEMP: -40°C TO 105°C
HI-POT TEST FROM WINDING TO CORE 1000VDC @ 2mA, 1 MIN
INTERWINDING CAPACITANCE @ SRF = 262pf (TYP)
|Z|@SRF=8 KILLO-OHM
SRF=400 KHz
RATED CURRENT: 1000 AMPS, APPROPRIATE AIR FLOW NEEDED.
DCR = 2.25 MILLI-OHMS MAX
L@DC BIAS: SEE TABLE ON RIGHT.
INDUCTANCE=300uH ± 10% NOM., MEASURED AT 1 KHz, 0.25V, ZERO DC BIAS SPECIFICATIONS:
- 2 BAKE VARNISH
SILICON DOW CORNING OR EQUAL
OUTER WRAP: 3M GLASS OR EQUAL
CORE: COMPACTED POWDERED CORE
MATERIAL: UL RECOGNIZED
- 1 NOTES: UNLESS OTHERWISE SPECIFIED READ FROM BOTTOM UP.
CAGE CODE: 5DME2



DC-BIAS	L
0A	300uH
50A	292uH
100A	284uH
150A	277uH
200A	269uH
250A	258uH
300A	244uH
350A	231uH
400A	220uH
450A	205uH
500A	194uH
550A	187uH
600A	181uH
650A	177uH
700A	173uH
750A	169uH
800A	166uH
850A	160uH
900A	157uH
950A	155uH
1000A	152uH

PARTS LIST		AUTOCAD		SOLIDWORKS	
UNLESS OTHERWISE SPECIFIED	DRAWING AND TOLERANCE PER ANSI Y14.5M AND [DIMETERS].	UNLESS OTHERWISE SPECIFIED	SIGN	DATE	DATE
TOLERANCE INCHES: .XXX±.010 .XX±.020 TOLERANCE METRICS: .XXX±.254 .XX±.51	ANGLE PROJECTION	DO NOT SCALE DRAWING	APPR	BO	07/27/17
SCALE	NOT TO SCALE	SHEET	1	OF	1